

**Quick Guide for VMDR-844 (4 CH) / VMDR-848 (8 CH)**

Complete User Guide and PC Management software is included in the CD, can also be downloaded <https://ventrainc.com/user-installation-guide>

[Full installation user guide](#)

or scan QR Code



Prior to permanent mounting of the VMDR and cameras, lay out system to familiarize the parts. Bench test connections in vehicle or office so VMDR SD slots, cables and connectors are easily accessible

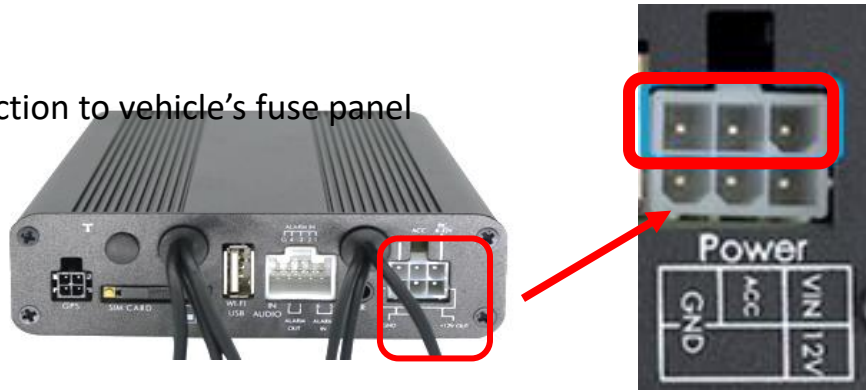
**Power Connection**

VMDR-840 power cable requires 3 wire connection to vehicle's fuse panel

**Yellow** = 12/24VDC Constant Power

**Blue** = IGN / ACC

**Black** = Ground



Connect the power cable 6 prong white square plug to the VMDR Power connector on the rear.

Use only the **3 wires on TOP** row (Yellow, Blue and Black) of the white Plug (Circled in red) to connect to vehicle fuse

**IMPORTANT: SD card MUST be formatted in the VMDR PRIOR to recording**

**Do NOT insert or Remove SD card while VMDR is powered On. Always power off system before handling card**

**SD card - IMPORTANT**

- Remove the screw from the SD card slot.
- Each slot supports up to 512GB SD card. Must be class U3 / V3 or faster
- If only using 1 SD card, use SD Card Slot 1
- If using 2 SD cards, label each SD card corresponding to Slot # to avoid mix up
- If multiple vehicles, label each SD card to VMDR / vehicle # to avoid mix up
- After format, SD card will show between 77.5 – 82.5MB, but capacity not reduced

**SIM Card (VMDR is compatible with T-Mobile Network)**

If VentraCloud service was ordered through Ventra, the SIM card is included and installed in the system.

SIM card gold contacts must face downward



**Warning:**

**Install VMDR system only when vehicle is safely parked, leveled and Powered OFF**

**Professional installation is highly recommended as system connects to vehicle fuse. Refer to vehicle owner's manual**

**Quick Reference Guide**

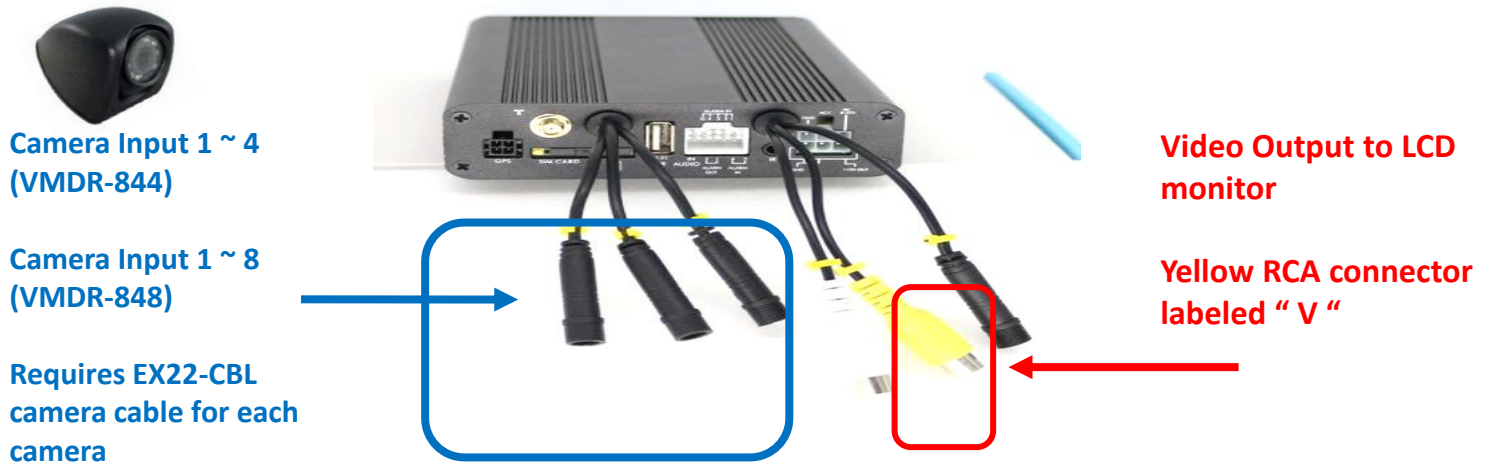
**Connect camera cable to rear or VMDR**

On the rear of VMDR, there are video input connections 1 – 4 (Black connectors with labeled Tags)

Each camera requires a Ventra EX22-CBLxx mini DIN cable in various pre-made length. Can double up on EX22-CBL cable if additional length is required, up to 60ft total

Use cable loom on each cable to protect Ventra camera cable from cuts and scratches

Connect EX22-CBL cable to VMDR video input, then connect to camera. ( Connect camera to VMDR before running cable in vehicle and permanent mounting to test angle)



**Connect Video output to LCD monitor ( LCD monitor sold separately)**

Video output RCA connection (Yellow Port) on the rear of VMDR. Use RCA cable to external LCD monitor

**Connect 4G antenna (LTE models only)**

Connect 4G antenna to 4G Antenna input



**Connect GPS Receiver**

Connect the external passive GPS cable into the **GPS** port on the rear left side of VMDR

The passive GPS receiver should be placed on the dashboard, or on windshield for direct line of sight to the sky for optimal reception. Do not cover the receiver



### Remote Control

Access VMDR settings menu via remote control by selecting Menu button. Requires connection to LCD monitor



Remote control button Introduction			
Item	Description	Item	Description
1	Split screen display	7	Enter
2	Force recording	8	Reverse
3	Quad full-screen display	9	Fast forward
4	Speaker mute button	10	Playback mode, play button
5	<b>Menu</b>	11	Pause
6	Navigation	12	Stop and Exit

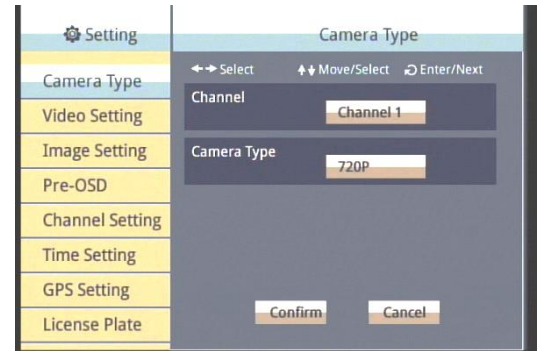
### Settings

All settings are pre-configured and ready to go out of the box

### Resolution of camera: Camera Type

Default is 1080P max at **30FPS**. If using 720P max **30FPS** cameras, **MUST** select CH and change resolution in setting for system to see/record CH.

System will reboot after each CH change. Must change each CH individually as required



### VentraCloud Remote Service (optional): LTE Network

If subscribe to VentraCloud remote viewing monthly service, the 4G network connections are pre-set. Will need to contact Ventra for login credential

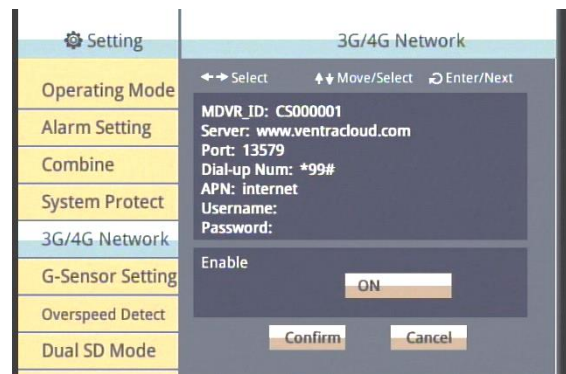
Default 4G network setting. Do NOT change unless instructed by Ventra

**Server:** [www.ventracloud.com](http://www.ventracloud.com)

**Port:** 13579

**APN:** fast.t-mobile.com (T-Mobile only)

**Dialup num:** \*99#



### Check Recordings of VMDR

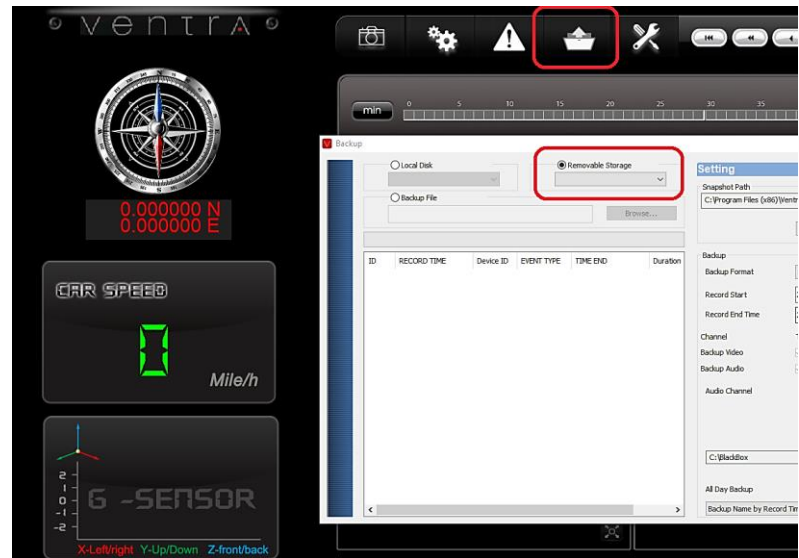
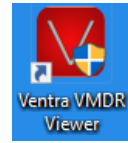
Once the cameras, cables, VMDR have been connected and powered on in a staging environment. Its time to check the video recordings. (If system has been powered on)

**Power OFF** the VMDR **before** removing / inserting SD Card.

Insert SD card into computer and view with VMDR PC desktop software included in CD

Or download from support section of website

<https://ventrainc.com/download-ventra/>



Click **Folder** icon to open select Drive pop up screen.

Select **Removable** storage button and select SD card drive from drop down menu

A list of all video recorded files will populate if VMDR was powered on and recording. Select any recording to view

