

Quick Reference Guide for VMDR-844 (4 CH) and VMDR-848 (8 CH)

Complete User Guide and PC Management software is included in the CD, can also be downloaded www.ventrainc.com/download

Prior to permanent mounting of the VMDR and cameras, we suggest laying out the system to familiarize the parts. Do test connections in vehicle PRIOR to permanent mounting of system so slots, cables and connectors are easily accessible

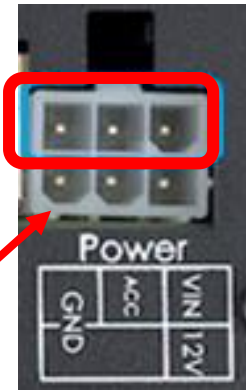
Power Connection

VMDR-840 power cable requires 3 wire connection to vehicle's fuse panel

Yellow = 12/24VDC Constant Power

Blue = IGN / ACC

Black = Ground



Connect the power cable 6 prong white plug to the VMDR-888 Power connector on the rear.

Use only the **3 wires on TOP** row (Yellow, Blue and Black) of the white Plug (Circled in red) to connect to vehicle fuse

IMPORTANT: SD card MUST be formatted in the VMDR on on desktop PC software PRIOR to recording

Do NOT insert or Remove SD card while VMDR is powered On. Always power off system before handling card

SD card

- Remove the screw from the SD card slot.
- Each slot supports up to 512GB SD card. Must be class U3 or faster
- If only using 1 SD card, use SD Card Slot 1
- After format, SD card will show between 77.5 – 82.5MB

SIM Card (VMDR is compatible with T-Mobile Network)

If cellular data service was ordered through Ventra, the SIM card is Included and installed in the system. If customer purchases from T-Mobile, SIM card would need to be installed in SIM slot on rear of VMDR.

SIM card gold contacts must face downward



Warning:
 Install VMDR system only when vehicle is safely parked, leveled and Powered OFF
 Professional installation is highly recommended as system connects to vehicle fuse. Refer to vehicle owner's manual

Quick Reference Guide

Connect camera cable to rear of VMDR

On the rear of VMDR, there are video input connections 1 – 4 (Black connectors with labeled Tags)

Each camera requires a Ventra EX22-CBLxx mini DIN cable in various pre-made length

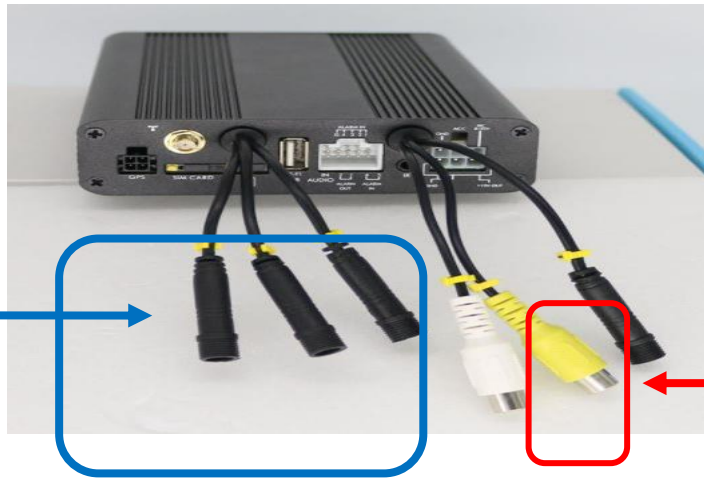
Connect EX22-CBL cable to VMDR video input, then connect to camera. (Connect camera to VMDR before running cable in vehicle and permanent mounting to test angle)



Camera Input 1 ~ 4 (VMDR-844)

Camera Input 1 ~ 8 (VMDR-848)

Requires EX22-CBL camera cable for each camera



Video Output to LCD monitor

Yellow RCA connector labeled " V "

Connect Video output to LCD monitor (LCD monitor sold separately)

Video output RCA connection (Yellow Port) on the rear of VMDR. Use RCA cable to external LCD monitor

Connect 4G antenna (LTE models only)

Connect 4G antenna to 4G Antenna input



Connect GPS Receiver

Connect the external passive GPS cable into the GPS port on the rear left side of VMDR

The passive GPS receiver should be placed on the dashboard, or on windshield for direct line of sight to the sky for optimal reception. Do not cover the receiver



Remote Control

Access VMDR settings menu via remote control by selecting Menu button. Requires connection to LCD monitor



Remote control button Introduction			
Item	Description	Item	Description
1	Split screen display	7	Enter
2	Force recording	8	Reverse
3	Quad full-screen display	9	Fast forward
4	Speaker mute button	10	Playback mode, play button
5	Menu	11	Pause
6	Navigation	12	Stop and Exit

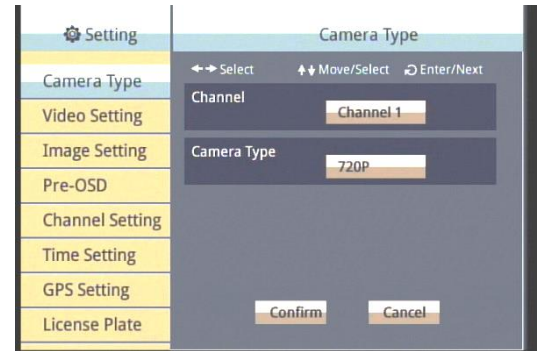
Settings

All settings are pre-configured and ready to go out of the box

Resolution of camera: Camera Type

Default is 1080P max at **30FPS**. If using 720P max **30FPS** cameras, **MUST** select CH and change resolution in setting for system to see/record CH.

System will reboot after each CH change. Must change each CH individually as required



VentraCloud Remote Service (optional): LTE Network

If subscribe to VentraCloud remote viewing monthly service, the 4G network connections are pre-set. Will need to contact Ventra for login credential

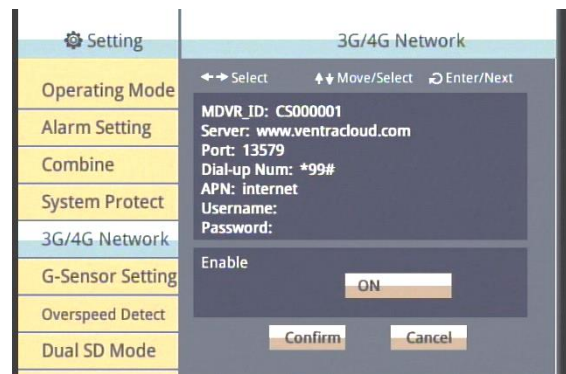
Default 4G network setting. Do NOT change unless instructed by Ventra

Server: www.ventracloud.com

Port: 13579

APN: fast.t-mobile.com (T-Mobile only)

Dialup num: *99#



Check Recordings of VMDR

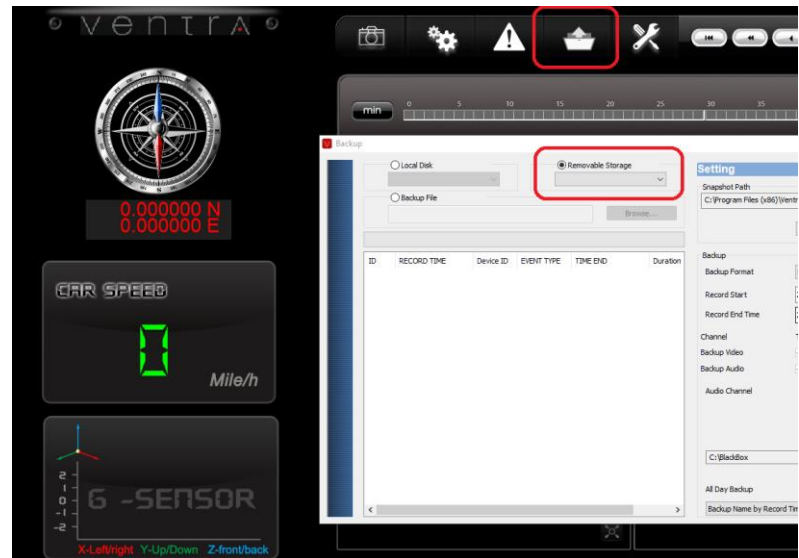
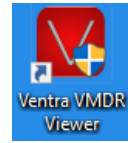
Once the cameras, cables, VMDR have been connected and powered on in a staging environment. Its time to check the video recordings. (If system has been powered on)

Power OFF the VMDR **before** removing / inserting SD Card.

Insert SD card into computer and view with VMDR PC desktop software included in CD

Or download from support section of website

<https://ventrainc.com/download-ventra/>



Click **Folder** icon to open select Drive pop up screen.

Select **Removable** storage button and select SD card drive from drop down menu

A list of all video recorded files will populate if VMDR was powered on and recording. Select any recording to view

