

Ventra VDR-220 / VDR-760 WiFi Connection Configuration Overview for VentraCloud

The following instructions explain the setup and programming of the VDR-220 to an External WiFi hotspot that the VDR-220 / VDR-760 will be connecting to for internet connection.

This enables subscribers to VentraCloud Video TeleMatics service to see remote live video, GPS location, history, event video clips archived, remote video playback and download.

External WiFi devices that VDR can connect to include: Cellular routers with WiFi, In-vehicle WiFi, Tablets with Cellular and Hotspot connection, Smartphones with hotspot capability

Link to download and install the WiFi config software on PC. Must be programmed to SD card via this software
[https://ventrainc.com/wp-content/uploads/2020/03/Wi-Fi-Config.exe .zip](https://ventrainc.com/wp-content/uploads/2020/03/Wi-Fi-Config.exe.zip)

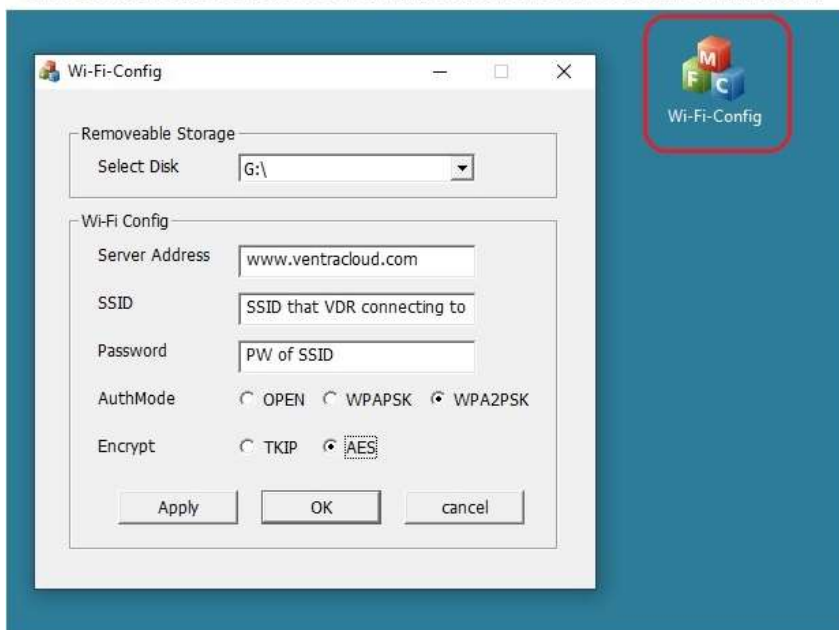
The instructional picture to config the WiFi is shown below

(If WiFi SSID of the router or smartphone has space or apostrophe, please change and replace with hyphen or underscore.

Example: “John’s Android” change to JohnAndroid or John-Android

WiFi Hotspot Setup for VDR 220 and VDR-760

Wi-Fi Config software is required. To download, visit <https://ventrainc.com/download-ventra/>



1. Open the Wi-Fi Config Software
2. Select the Drive the SD card is located
3. Enter www.ventracloud.com
4. SSID = enter WIFI SSID that VDR will be connecting to
5. Password = password of WiFi
6. Auth Mode = method of Authentication (Usually WPA2PSK)
7. Encrypt = method of encryption (Usually AES)
8. Select Apply and OK
9. Safely remove SD card from computer and insert into VDR system. Power on to load setting

Website to login: www.ventracloud.com

Login: As provided by Ventra (Cap sensitive)

PW: xxxxxxx (provided by Ventra)